



A LUSIGNPANEL[®]
Aluminum Composite Panel

TOP GRADE PRODUCTS.

**COLOR
CHART**

ISO 9001 / 14001, OHSAS 18001



Digital Printing Board
(PE ACP)

Auto Service Shop
(PVDF ACP)



ABOUT ALUSIGNPANEL



Professional ACP manufacturer since 2000

Wenzhou Jixiang Composite Panel Co.,Ltd, founded on 2000
Factory located in Wenzhou city,Zhejiang province,China
with over 300 employees

To make your trusted brand of ACP/ACM

Company with ISO9001, ISO14001 & OHSAS18001 certification
Product series have passed UL, CE, SGS, SGS FR, CTC
Company main brand ALUSIGNPANEL & YBOND
accept OEM design as well



Factory with 9 high-speed production lines

6 ACP production lines--daily output 32,000 square meters
1 A2 FR ACCP production line--daily output 5,000 square meters
2 automated coating lines--monthly output over 1,200 tons



Metallic & Solid Colors



SJ-8001 Flash Silver



SJ-8011 Pure White



SJ-8013 Off White



SJ-8002 Silver Grey



SJ-8014 Ivory White



SJ-8049 Black



SJ-8004 Champagne Silver



SJ-8005 Grey Metallic



SJ-8048 Galaxy Black



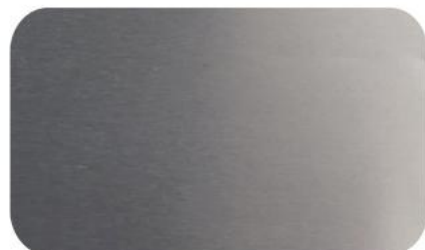
SJ-8006 Champagne Golden



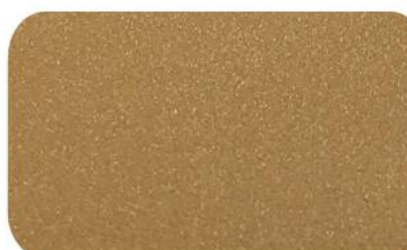
SJ-8008 Flash Gold



SJ-8030 Jade Metallic



SJ-8003 Aluminium



SJ-8009 Brown Copper

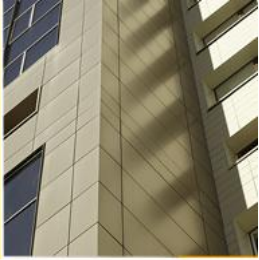


SJ-8080 Blue Metallic

Colors for reference only



Office Buildings
(PVDF&PE ACP)



Metallic & Solid Colors



SJ-8037 Pure Yellow



SJ-8034 C-Red



SJ-8025 Post Green



SJ-8038 Lemon Yellow



SJ-8017 Telecom Blue



SJ-8021 Apple Green



SJ-8040 Orange Red



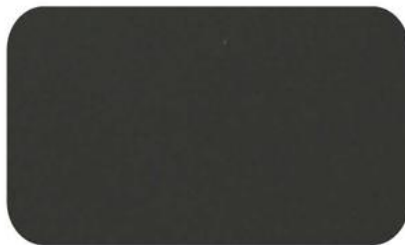
SJ-8019 Sea Blue



SJ-8046 Coffee Brown



SJ-8051 Light Gray



SJ-8052 Dark Gray



SJ-8043 Deep Rose

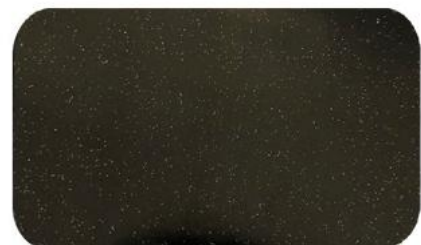
Pearl Colors



SJ-8841 Pearl White



SJ-8817 Pearl Red



SJ-8821 Pearl Black

Colors for reference only



Glossy Colors



SJ-8825 Glossy White



SJ-8826 Glossy Red



SJ-8827 Glossy Green



SJ-8828 Glossy Black



SJ-8831 Glossy Yellow



SJ-8832 Glossy Blue

Special Colors



SJ-8822 Golden Mirror



SJ-8823 Silver Mirror



SJ-8053 Brushed Silver



SJ-T1 Timber Look



SJ-T2 Timber Look



SJ-8058 Brushed Golden



SJ-T3 Timber Look



SJ-9901 Anti-scratch Wood



SJ-9903 Anti-scratch Wood

Colors for reference only

■ Main Structure

- ALUSIGNPANEL Protective Film
- Top Aluminum Skin with PE/PVDF coating
- Polymeric membrane
- Standard LDPE Core & Optional FR Core
- Polymeric membrane
- Bottom Aluminum Skin with service coating



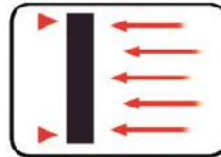
Easy Maintenance



Easy Processing



Non-Toxicity and Safety

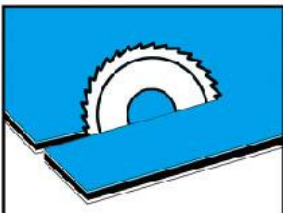


Super Peeling Strength

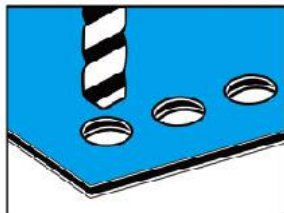


Excellent Coating Property

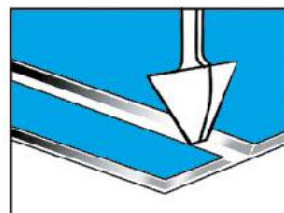
■ ACP Processing



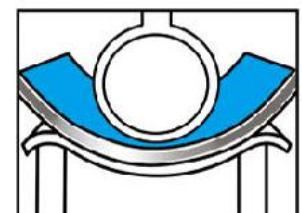
Sawing



Drilling



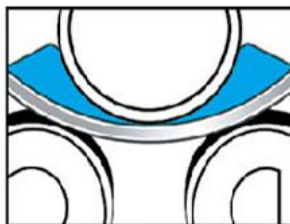
Slotting



Bending



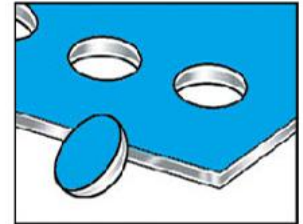
Folding



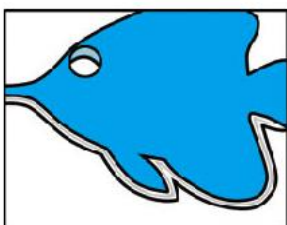
Roll Bending



Gluing



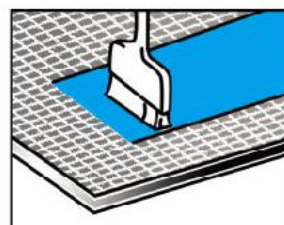
Punching



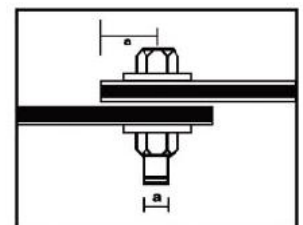
Contour Cutting



Digital Printing



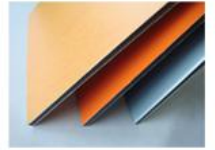
Silk-screen



Clamping & Bolting

■ Specification

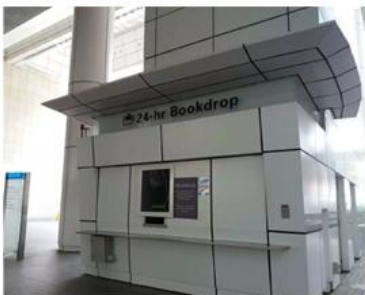
Width	1220mm / 1250mm / 1500mm
Length	upon request, recommend 2440mm, 3050mm, 5000mm
Panel Thickness	2.0mm ~ 6.0mm, recommend 3mm, 4mm
Alu. Skin Thickness	0.10mm ~ 0.50mm, recommend 0.21mm, 0.30mm, 0.50mm
Coating	Polyester (PE) , PVDF Kynar, FEVE
Core Material	Standard Polyethylene plastic core or Fireproof core
Colors	refer to factory's standard color chart or custom
Protective Film	ALUSIGNPANEL or YBOND, accept custom design
Standard Size	1220mm * 2440mm (4' * 8'), 1500mm * 3050mm (5' * 10')



■ Application & Projects



- Exterior wall cladding of commercial buildings, hotel, apartment, stadium, hospital, restaurant, shopping mall and so on.
- Decorative materials for the bank, stores, gas station, galleries.
- Billboard, signage board, digital printing board.
- Ceilings, kitchen cabinet, balcony, partition and indoor decoration.
- Tunnel, subway interiors, vehicle bodies, and industrial usage.
- Re-decoration of the old building.



ALUSIGNPANEL®

Aluminum Composite Panel

make your innovation

WENZHOU JIXIANG COMPOSITE PANEL CO.,LTD
NO.228 WEISAN RD ,YUEQING ECONOMY INDUSTRY ZONE , WENZHOU CITY ,ZHEJIANG PROVINCE ,CHINA . 325600
Tel : + 86 577 62999101 Fax : +86 577 62999102
E-mail : info@ybond.com.cn Web : www.alusignpanel.com www.ybond.com.cn

